

0609 L0057

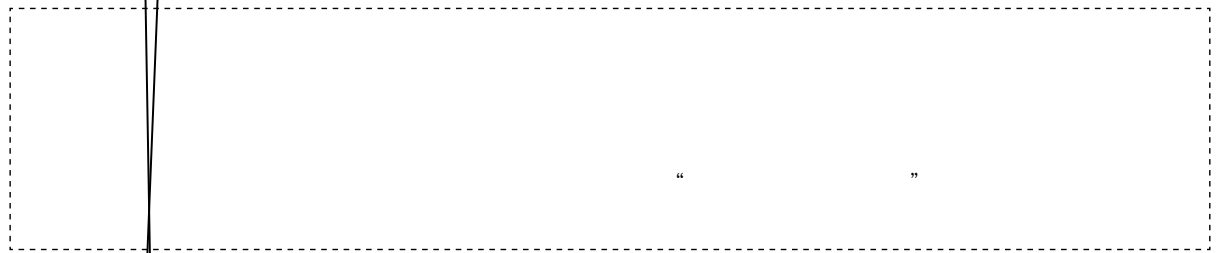
中

研 参 考

2015 19
365

2015 10 15

.....	02
.....	08
.....	13
.....	17
.....	21
.....	25
.....	29



10

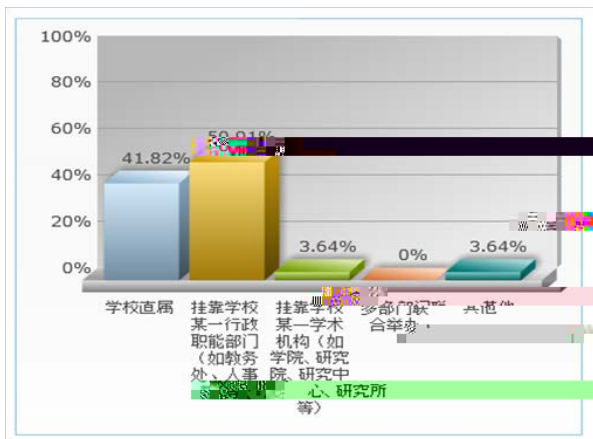
100082 010 59893297
gaoyanbianjibu@163.com

高校教师教学发展中心运行状况调查研究

2014 9—10

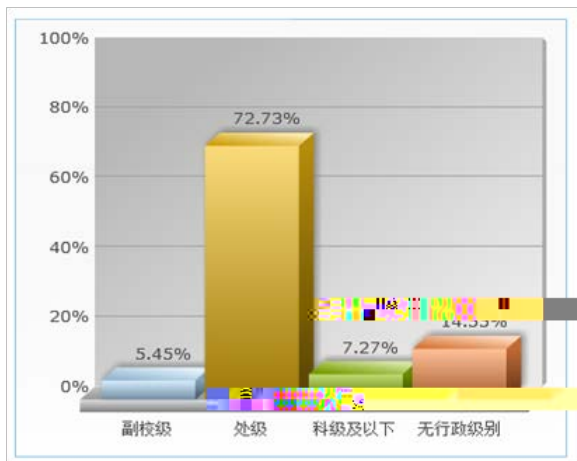
28 22 “ ” 2

50 10 71.15%
2-5 55.77% 30.76%
2-5



	()	%
	1	2
	2-5	22
	6-10	13
	11-50	13
	51	2
	0	4
	1	6
	2-5	29
	6-10	9
	11	4
	0	16
	1	6
	2-5	15
	6-10	7
	11-50	6
51	2	

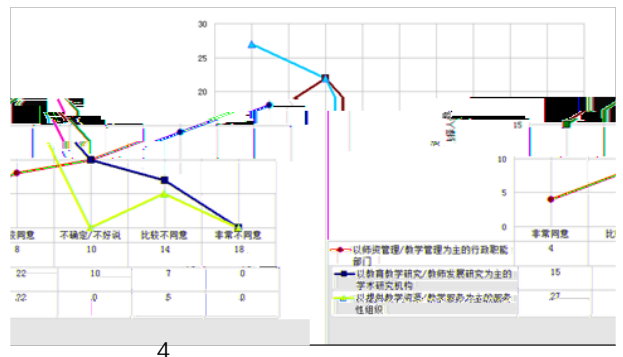
2
72.73% 5.45% 72.73% 14.55% 3 5.45% 8 14.55% 3



4 90.74%

3 3 2 52 54 2

“ / ” 68.52% “ ” 22.22% / “ / ” 4

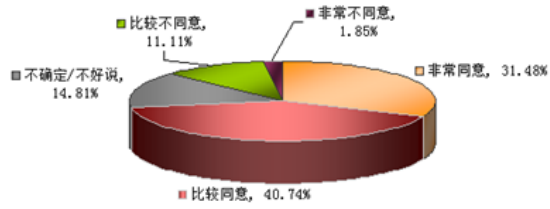


2 1 2

“ ”

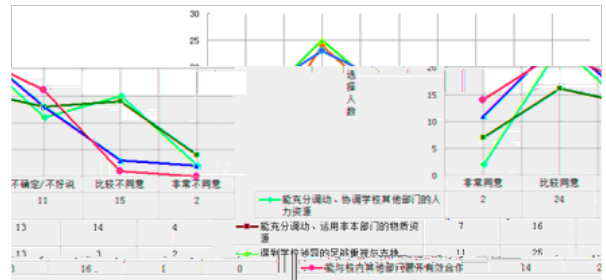
40 72%

5



5

5



7

1

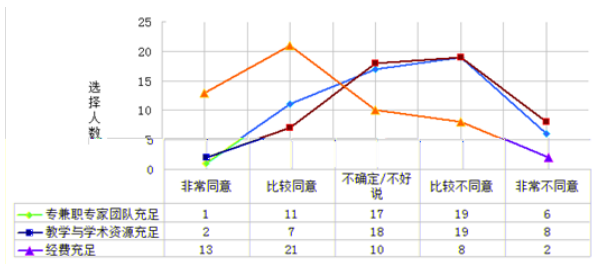
1

54

62.96%

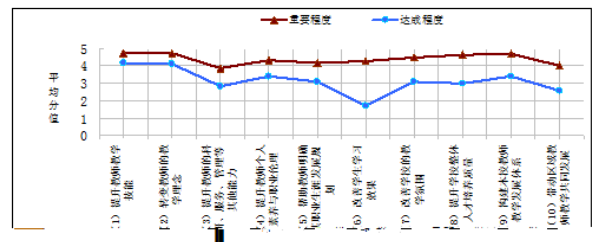
46.29%

50%



6

2



8

2

/

/

/

/

/

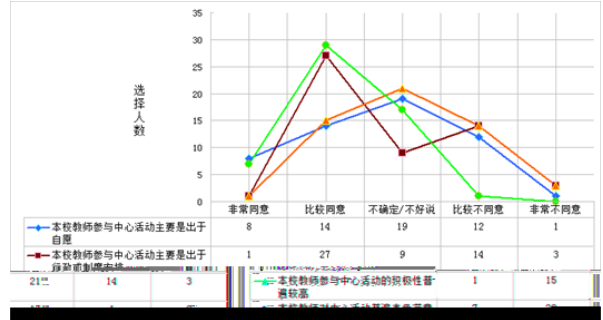
/

/

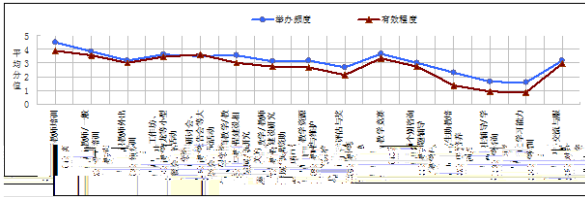
/

66.67%

10



10



9

4

3

50%

68%

75%

92.3%

5

10%

3

25%	17	31.48%
26%—50%	20	37.04%
51%—75%	12	22.22%
76%	5	9.23%
	54	

4

	1
	2
	3
	4
	5
	1
	2
	3
	4
	5
	6

“ / ”
“ / ”
”

“ ”

“ ”

“ ”
“ ”
”
“ / ”

超越教师发展：范式转换与教学发展中心的建构

Palomar College

——“ Learning Paradigm ”

20

60

20 90

“ ” Learning
“ ” Instruction “
Instruction paradigm ”

Martin Tiow

50

Robert

Bar

Jm Tagg

361005

361005

361005

2015 3

Ernest L. Boyer “ ”
the scholarship of teaching ,SOT
the Scholarship of Teaching and

Learning ,SOIL ,

“ ” “ ”

“ ”

“ ”

“ ”

“

deep learning

”

significantly learning

“

” “ ” “ ”

“

“ Center for Teaching
and Learning” “ Center for Teaching Excellence” “ Faculty
Development” “ Learning Center” “ Center for the Studies of
Higher Education”

”

“

“ ”

” Center for Teaching and Learning CIL 1992
Promoting Excellence and Innovation in Teaching
and Learning at U-M, University of Michigan CRLT

“ ” “

”

“ ” “ ”

“ ”

“ ”

“ ”

—

“ ” “ ”

and Learning
Derek Bok Center for Teaching
and Learning
Mcquarie University

2

i a ° a a ç

B L
q

Teaching Tips

Information Technology Center

multiplier

effect

3

academic support
support
support

diagnostic
individual consultation

blackboard

email

5

Activity Based Learning

4

3/4

75%

—

CIL

CIL

“ ”

教师教学发展的融合理念与现实探索

”

“

“

”

210044

210044

2014 5

• 13 •

” “

1998

“

”

“ ”

30

19

0

“ ” 2012 “ ” 2013

2012

“ ”

30%

2013

“ ”

17
48%

467

2013

2013 2016

1000

4000

2013 “

” “

” 6

3

3 4

2012

52

2013

103

2013

40

VIP

45

45

11

638

2012

160

10

1

4

2013 8 25 -9 2

2

6

246

100 /

“ ” 300 2013 “ ”

1.

2013 2000 E

2013 800

2014

310058

310058

310058

2014 6

大学教师教学发展中心：是什么？做什么？

2011

“ ” “ ” “ ” “ ” “ ”

1992

” — “ f
½Kò5'GÀ5'É À šKÔ4 PPò7-2èj "õ°2©å1 !£ð3aÁ" €>2 T 6äÈäSfòì, *F77 •Ã, S]ä/ °µ•9

2011

2007

1998

“ ”

建设具有本校特色的教师教学发展中心

2011 7 1 “ ”

“ ”

“ ”

Center for Research on Learning and Teaching CRLT

1992

1975

90

”

2012 11

30

34

100

21%

2003

” Centers of Excellence in Teaching “

2005

74

2005 6 2009 10 3

1 5

235 80

“ ”

“ ”

100

325035

2013 6

• 21 •

—

2011 7

1

2

2

5

1.

— — — ”

30

— — — ”

3

U

U

2012 2013

“

”

291

2

1200

64

80

“ — — — ”

“ ” “ ”

“

”

10

“ ” “ ”

5

PBL

” “ PPT ” “

”

7

“

...

” “ ”

½ J

3

“ ”

“ ”

“

— — — ” “

”

4

1

“ ”

2

“ ”

4

3

3

1

2

7

PBL

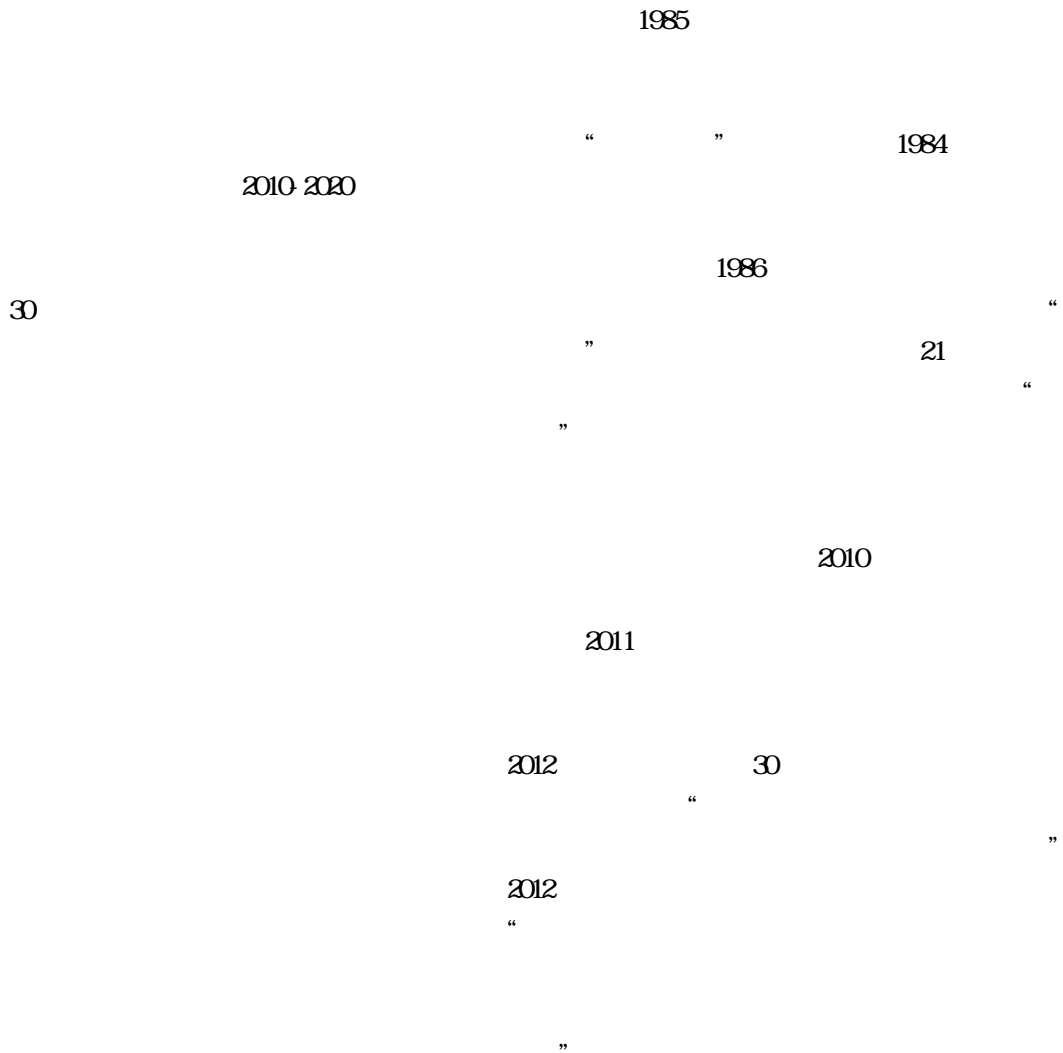
“ ”
“ ”

3

2014 4

高校教师发展中心建设的制度逻辑与理论内涵

Faculty Development FD



“

”

2012

“

”

2012

“

FD

”

“

30

FD

”

“

”

“

”

20 60
“ — ”

21 “ ”

” “ ”

”

“

”

“

“

”

“

”

“

”

“ ”

361005

2013 12

新建本科院校设置教师发展中心的策略

1962

50

75%

1990

1999

320

1

2

4

1

1.
20
3

2
”

“ ”

30

2 “

” “ ” “ ”

“ ” “

”

“ ”

“ ”

2

		6 2	
		1-2 3 6	

1

2

50%

3

3

—



“ ”

“ ”

“ ”

“ ”

“ ”

401331

2013 4