

15.83% 2009 5.93

2010-2020

"  
.....  
"  
"  
"  
"  
"

"  
"  
"

"  
" "  
" " 3

2014

" "

"  
.....

2014

37.5% 2009 9.3



				2014
	203		37.7	
	2009	58.3		
		2014	43.6	
"	"	"	"	"
				5
				4
	643			
				4
98		132		478
	884		2009	44
196	612		170	
		61		
				1
5				

“

”

“

”

“

”

:

“

”

—

类别	博士生	硕士生	本科生	专科生	其他
数量(万人)	0.34	2.25	107.45	10.68	0.34
比例(%)	0.28%	1.86%	88.75%	8.83%	0.28%
近7年年均增长率	2.60%	2.45%	5.96%	-1.74%	-5.72%

”

“

“

”

“

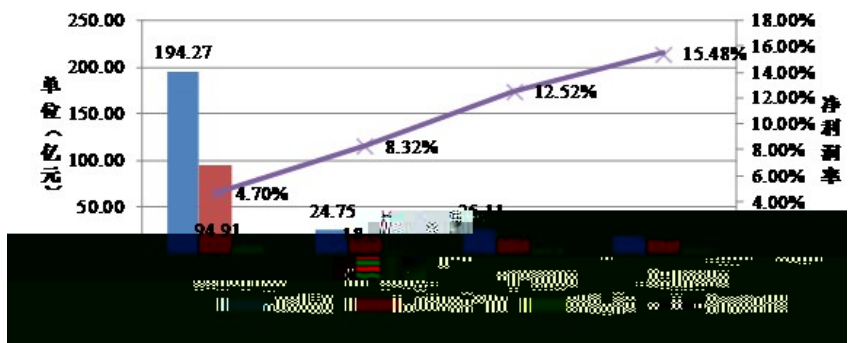
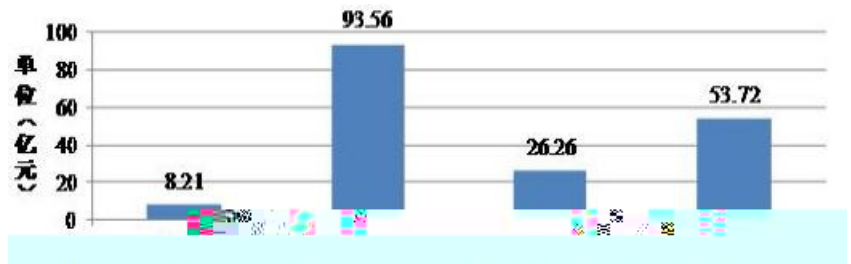
”

学校	毕业综合训练课题	在实验(实习)或工程实践、社会调查中的完成数	实践性综合训练课题占毕业综合训练课题总数
"985工程"高校(14所)			
"211工程"高校(17所)			
老本校院校(137所)			
新建本科院校(318所)			
总计(486所)			

学校类型(统计样本)	基地数(个)	每次接纳学生数(万人)	当年接纳学生数(万人)	普通本科生数(万人)	占在校生数比例
"985工程"高校(14所)	2340	17.6	15	34.38	43.62%
"211工程"高校(17所)	3636	20.5	14.93	33.35	44.77%
老本校院校(137所)	21388	98.56	86.61	249	34.78%
新建本科院校(318所)	30805	130.06	113.74	308.72	36.84%
总计(486所)	58169	266.72	230.27	625.46	36.82%

学校类型(统计样本)	专业数	总学分	实践(含实验)学分			实践(实验)学分总学分占比
			集中实践	实验	小计	
"985工程"高校(14所)	92	179	28	10	38	21.23%
"211工程"高校(17所)	74	172	24	10	34	19.77%
一般本校院校(138所)	51	184	31	12	43	23.37%
新建本科院校(325所)	29	178	31	17	48	26.97%
合计(494所)	38	180	30	14	44	24.44%

年份	学校类型	学校数(所)	学生数(人)	创新项目(个)	创业项目(个)	项目经费(亿元)
2012	部属	90	46724	11403	1581	2.57
	地方	413	66182	13859	2157	3.22
	总计	503	112906	25262	4760	5.82
2013	部属	115	33477	8899	1112	1.1
	地方	638	50444	11633	2451	2.1
	总计	753	83921	19742	3563	4.1
两年合计		-	196827	45004	8323	10



" "

"

"

"

"

"

"

"

"

"

"

"

"

"

"

"

"

"

"

"

"

"

"

"

"





:

"

"

"

"

"

"

"

"

"

"

"

"

"

"

"

"

"

"

"

"

"

"

"

"

"

"

" "

" "

" "

" " " " " "

! 七  
! 361005 !  
! 100088  
!  
! 361005  
全  
全  
!  
!  
2016 2



"

— —

"

"

"

"

"

"

"

"

"

"

"

"

"



"

" "

"

"

"

"

"

"

"

"

"

"

"





"

"

"

"

"

"

"

"

"

"

"

"

"

"

"

"

"

"

"

"

"

"

"

"

"

"

"

"

"

"

"

"

"



"

"

"

"

"

"

"

"

" " "  
" "  
"

"

" " "  
" "

" "  
" "



! 七  
! 361005 !  
! 361005 !  
2014 全 !  
!  
2016 3

“ ”

“ ” “ 211 ” 2008 2011 100 2012

9

“ 211 ”

5

“ ”

“ 211 ”

“ ”

“ 985 ” 2010

2010—

2020

“

“ 985 ”

“ ”

2013

“ 985 ”

“

335

“ 985

“ ” 211 “ ”

“ ”

2014

“ 985 ” “ 211 ”

“ ”

“

“

“

“

“

“

“ ”

2015

1. “985

“ ” 211 “

10

“

“

“ 985

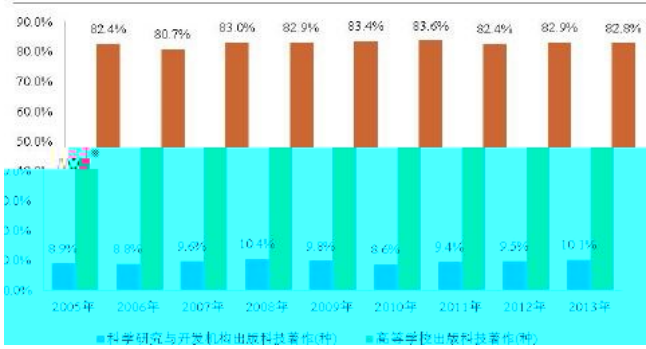
“ ” 211 “

“ 985

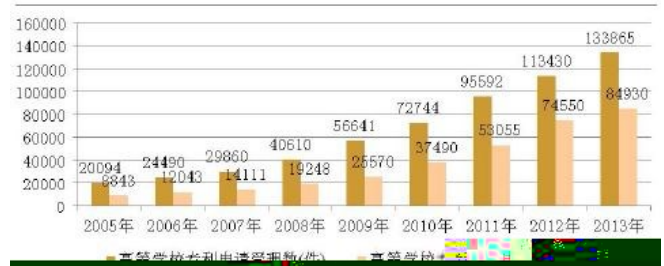
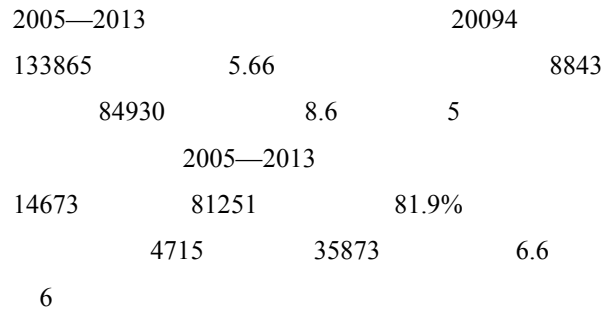
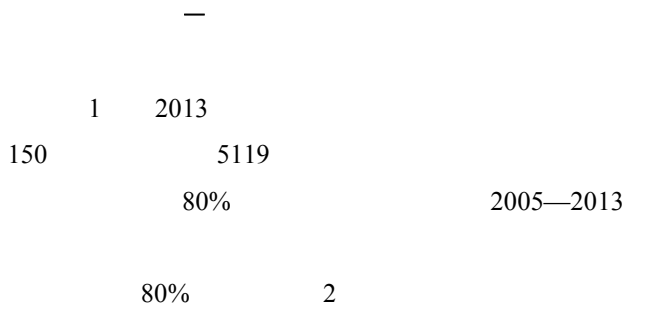
“ ” 211 “

90

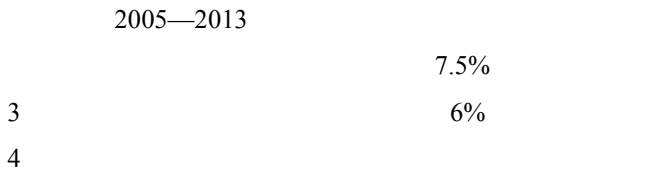




10%

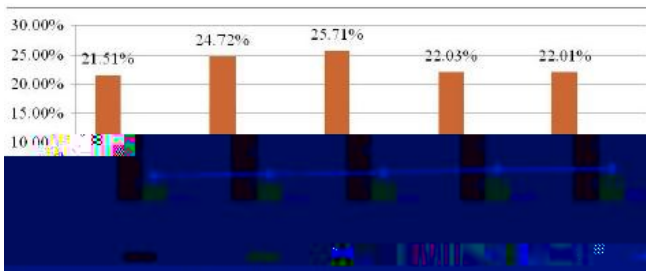


50%



7.5%

6%



4.

2011—2020

2020

2011

" " 2010 4  
2014 4.5 5 20.5

2013  
50.1  
19.3 38.5%  
7.66 2009 65.8%  
21.8 2009 42.9%  
15.29% 43.51%

" " "

"

(F



" "

2014

" "

2014

" "

" " " "

"

"

" "

" "

" "

" "

" " " "

" "

" " " "

" "

" " " "

" " " "

" "

" "

" "

" " " "

" " "

" "

" "

" "

" "

" "

" "

“ ”

3.

1.

“ ”

“ ”

“ ” “ ”

“ ” “ ”

“ ” “ ”

“

“ ”

“ ”

“ ”

“ ”

2.

“ ”

“ ”