



21世纪教育研究院
21st Century Education Research Institute



衷心感谢给予本次课题研究建议的专家学者，以及参与数据收集的志愿者等各界人士。

010-62236842

010-62234332

8

C 409

100088

www.21cedu.org

editor@21cedu.cn

2014 7 25

10

10

2010

21

2014

75

[2014]23

[2014]55

2014 12

31

1

1.

75

71.30

21

75

71.30

60

60

95.87

21.40

70-80 23

80-90 21

95.87

92.97

91.10

1

: 50

2014-7-29.

60.00%

14.67% 18.67%

3) 23

52

69%

78.27

60

100.00

50.00

52

23

10 31

3.

1)



B. 2013-2014

4 7 4 21

C.

D. 2012

A.

60

B. 2014

100%

C.

3

10000

1000

3800

1800

1000

1 2014

		71.30			
			38		75.52
1		95.87	39		75.48
2		92.97	40		75.23
3		91.10	41		74.93

2 2014

“

”

—		69.60	38		74.33
1		98.67	39		74.17
2		97.50	40		74.00
3		97.00	40		74.00
4		95.67	42		73.17
5		95.00	43		72.67
6		93.50	44		71.38
6		93.50	45		70.33
8		91.67	46		68.83
9		89.71	47		68.05
10		88.38	48		67.21
11		87.17	49		66.83
12		87.05	50		66.71
13		86.83	51		66.67
14		86.50	52		66.33
15		86.33	52		66.33
16		84.83	54		64.00
17		84.38	55		62.17
18		84.33	56		62.00
18		84.33	57		61.38
20		83.26	58		56.67

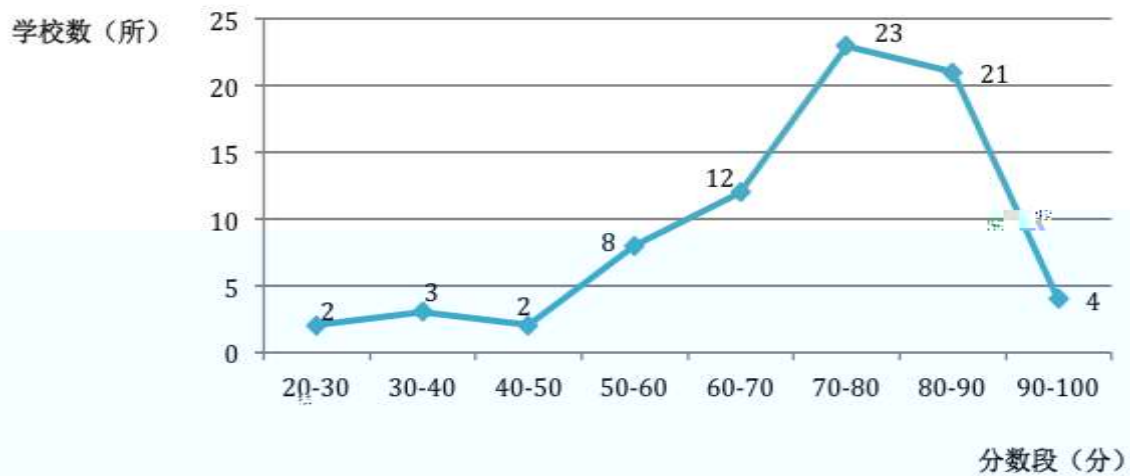
3 2014

“

”

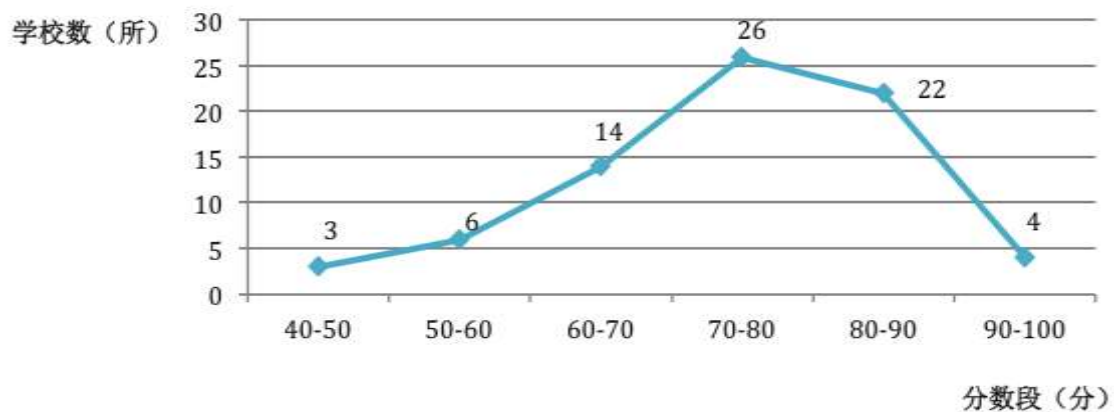
—	73.80	36	75.00
1	93.00	36	75.00
2	91.00	40	73.00
3	90.00	40	73.00
3	90.00	40	73.00
5	89.00	40	73.00
5	89.00	40	73.00
7	86.00	40	73.00
7	86.00	46	72.00
7	86.00	46	72.00
7	86.00	46	72.00
7	86.00	46	72.00
12	85.00	46	72.00
13	84.00	46	72.00
13	84.00	52	70.00
13	84.00	53	69.00
13	84.00	53	69.00
17	83.00	53	69.00
17	83.00	53	69.00
17	83.00	57	68.00
17	83.00	58	67.00
21	82.00	58	67.00
22	81.00	60	66.00
22	81.00	61	65.00
24	80.00	61	65.00
24	80.00	61	65.00
24	80.00	64	61.00
27	79.00	64	61.00
27	79.00	64	61.00
27	79.00	67	59.00
30	76.00	67	59.00
30	76.00	69	57.00
30	76.00	70	55.00
30	76.00	71	54.00
30	76.00	72	51.00
30	76.00	73	48.00
36	75.00	74	44.00
36	75.00	74	44.00

1.

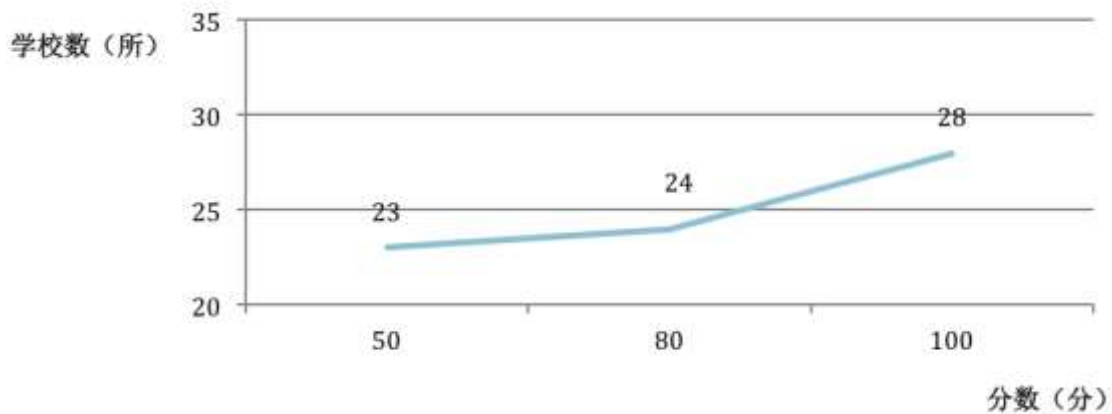


1 2014

2 2014



3 2014



4 2014

2.

5

		74	98.67%
		70	93.33%
		74	98.67%
		73	97.33%
		71	94.67%
		70	93.33%
		64	85.33%
		63	84.00%
		67	89.33%
		59	78.67%
		75	100.00%
		75	100.00%
		75	100.00%
		58	77.33%
		69	92.00%
		74	98.67%
		75	100.00%
		52	69.33%



	28 ()	61	81.33%
	29	55	73.33%
	30	52	69.33%
	31	68	90.67%
	32	66	88.00%
	33	63	84.00%
	34	33	44.00%
	35	48	64.00%
	36	66	88.00%
	37	68	90.67%
	38	62	82.67%
	39	59	78.67%
	40	57	76.00%
	41	60	80.00%
	42	59	78.67%
	43	62	82.67%
	44	46	61.33%
	45	37	49.33%
	46	32	42.67%
	47	58	77.33%
	48	58	77.33%
	49	30	40.00%
	50	54	72.00%
	1	75	100.00%
	2	71	94.67%
	3	54	72.00%
	4	75	100.00%
	5	61	81.33%

	6		64 85.33%
	7		45 60.00%
	8		57 76.00%
	9		45 60.00%
	10		69 92.00%
	11		18 24.00%
	12		68 90.67%
	13		73 97.33%
	1		75 100.00%
	2	10 31	52 69.33%

7

6	1		70	93.33%
			71	94.67%
			64	85.33%
			73	97.33%
			72	96.00%
			68	90.67%
			69	92.00%
	2		42	56.00%
			54	72.00%
	3		56	74.67%
			43	57.33%
	4		56	74.67%
			17	22.67%
	5		52	69.33%
		42	56.00%	
		48	64.00%	
6		74	98.67%	
8	7		62	82.67%
			64	85.33%
			54	72.00%

	8		49	65.33%
			49	65.33%
	9		57	76.00%
			34	45.33%
			52	69.33%
	10		63	84.00%
			43	57.33%
			20	26.67%
	11		66	88.00%
			65	86.67%
			52	69.33%
			59	78.67%
	12		26	34.67%
	13		48	64.00%
14		55	73.33%	
		46	61.33%	
7	15		57	76.00%
			67	89.33%
	16		51	68.00%
			47	62.67%
	17		38	50.67%
	18		61	81.33%
			60	80.00%
19		70	93.33%	
		70	93.33%	
		70	93.33%	

			71	94.67%
	20		71	94.67%
			71	94.67%
			71	94.67%
			71	94.67%
	21		55	73.33%
			55	73.33%
			56	74.67%
			45	60.00%
	5	22		51
23			39	52.00%
24			48	64.00%
			50	66.67%
25				

			64	85.33%
	33		63	84.00%
	34		33	44.00%
	35		48	64.00%
4	36		66	88.00%
	37		67	89.33%
			68	90.67%
	38		62	82.67%
	39		59	78.67%
3	40		57	76.00%
	41		60	80.00%
	42		59	78.67%
4	43		62	82.67%
	44		46	61.33%
	45		37	49.33%
	46		29	38.67%
			28	37.33%
2	47		58	77.33%
	48		58	77.33%
2	49		30	40.00%
	50		50	66.67%
			26	34.67%

			75	100.00%
1	1		71	

1	10		69	92.00%
3	11		18	24.00%
			16	21.33%
	12		68	90.67%
			65	86.67%
			73	97.33%
13		72	96.00%	
1	1	50	75	100.00%
		10		
1	2	10 31	52	69.33%
		50 10 31		
		30 10 31		
		0		

70%

20%

10%

[2014]23

[2014]55

8 “

”

6	1		2/7
			2/7
			2/7
			2/7

	13		2
	14		1
7	15		1
			1
	16		1
			1
	17		2
	18		1
			1
	19		1/2
			1/2
		1/2	
		1/2	
20			



21世纪教育研究院
21st Century Education Research Institute



	46		1
			1
2	47		2
	48		2
2	49		2
	50		1
			1

9 “

”

1	1	7	2
			2
			2
			1
3	2	7	7
			7
	3	7	7
	4	16	3
			10
3			
3	5	7	3
			4
	6	7	3
			4

			7
	7	7	4
			3
			7
2	8	7	4
			3
			7
	(9)	7	4
			3
			7
1	10	7	7
			7
3	11	7	3
			4
	12	7	3
			4
	13	7	3
			4

10 “ ”